

2

# ONE of 6.000

Premium tools for  
professionals!



# RODIA®

## Diamond Core Dilling

<b>System overview Diamond Core Drilling</b>	38 - 39
Characteristics Diamond Drill Bits	40
<b>Hand-Operated Drilling</b>	
Wet Drilling Machine	41
<b>Hand-Operated &amp; stationary Drilling</b>	
Wet Drilling Machine	43
Diamond Wet & Dry Drilling System RODIACUT®	42 - 47
<b>RODIA® Diamond Drill Bits</b>	
Wet Cutting Drill Bits for Natural Stone, soldered	48
Wet & Dry Cutting Drill Bits, Space Welding	49 - 50
<b>Accessories for Hand-Operated &amp; stationary Drilling</b>	
Vacuum Pump Systems	51
Accessories Diamond Core Drilling	51 - 52
<b>Extraction Systems</b>	
Wet & Dry Extraction Unit	53



Do you want to  
know more about  
our products?  
Please scan the  
QR-Code!

# RODIA® Diamond Core Drilling

## System Overview

### Hand-Operated Drilling

**RODIADRILL  
Ceramic**



**RODIADRILL 160**



**RODIADRILL 200**



**RODIACUT® 150,  
RODIADRILL 160**



	Hand-Operated	Hand-Operated	Hand-Operated	Hand-Operated/Stationary
<b>Stationary Drilling in Concrete:</b>	Ø 6 - 67 mm	Ø 10 - 132 mm	Ø 10 - 200 mm	Ø 10 - 132 mm
<b>Stationary Drilling in Masonry:</b>	Ø 6 - 67 mm	Ø 32 - 162 mm	Ø 32 - 250 mm	Ø 10 - 152 mm
<b>Hand-Operated Drilling in Concrete:</b>	Ø 6 - 35 mm	Ø 10 - 82 mm	Ø 10 - 82 mm	Ø 10 - 82 mm
<b>Hand-Operated Drilling in Masonry:</b>	Ø 6 - 67 mm	Ø 32 - 162 mm	Ø 32 - 162 mm	Ø 32 - 162 mm
<b>Output:</b>	800 Watt	1400 Watt	2400 Watt	1400 Watt
<b>Gear:</b>	2 Gear	2 Gear	3 Gear	2 Gear
<b>Transmission:</b>	3600 / 6400 r.p.m.	500 / 1050 r.p.m.	600 / 1250 / 3200 r.p.m.	500 / 1050 r.p.m.
<b>Torque:</b>	4 / 7 Nm	55 / 27 Nm	71 / 34 / 17 Nm	55 / 27 Nm
<b>Weight:</b>	3,4 kg	6,7 kg	7,2 kg	16,7 kg

Page

41

43

43

42, 43

### Drill Bits

**High Speed Plus-Nature stone\***



**DX- High Speed Plus\***



**SPEED STAR DX\***



<b>Connection:</b>	G 1/2"	G 1/2", 1.1/4" UNC	G 1/2", 1.1/4" UNC
<b>Drill Bit Diameter:</b>	Ø 6 - 67 mm	Ø 20 - 300 mm	Ø 10 - 500 mm
<b>Working length:</b>	up to Ø 10 mm = 50 mm from Ø 12 mm = 120 mm	G 1/2", 400 mm working length 1.1/4" UNC, 430 mm working length	G 1/2", 400 mm working length 1.1/4" UNC, 430 mm working length
<b>Application:</b>	wet	wet & dry	wet & dry
<b>Tiles:</b>	☺☺☺	☺	☺☺
<b>Granite:</b>	☺☺☺	☺	☺☺
<b>Marble:</b>	☺☺☺	☺	☺☺
<b>Brick:</b>	☺☺	☺☺☺**	☺☺☺**
<b>Masonry:</b>	☺	☺☺☺**	☺☺**
<b>Lime-Sand Brick:</b>	☺	☺☺☺**	☺☺**
<b>Asphalt:</b>	☺☺	☺☺☺**	☺☺☺**
<b>Screed:</b>	☺☺	☺☺☺	☺☺
<b>Concrete:</b>	☺☺☺	☺☺☺	☺☺
<b>Reinforced Concrete:</b>	☺☺☺	☺☺	☺☺☺

Page

48

49

50

\* Special lengths and Diameters on request, \*\* Suitable for Dry Drilling, ☺☺☺ Ideally suited ☺☺ very suitable ☺ suitable

# RODIA® Diamond Core Drilling

## System Overview

### Stationary Drilling

**RODIACUT® 150,  
RODIADRILL 200**



**RODIACUT® 250,  
RODIADRILL 200**



**RODIACUT® 250,  
RODIADRILL 500**



**RODIACUT® 400 PRO,  
RODIADRILL 500**



	Hand-Operated/Stationary	Hand-Operated/Stationary	Stationary	Stationary
<b>Stationary Drilling in Concrete:</b>	Ø 10 - 152 mm	Ø 10 - 200 mm	Ø 32 - 250 mm	Ø 32 - 400* (500) mm
<b>Stationary Drilling in Masonry:</b>	Ø 32 - 225 mm	Ø 32 - 225 mm	Ø 32 - 250 mm	Ø 32 - 400* (500) mm
<b>Hand-Operated Drilling in Concrete</b>	Ø 10 - 82 mm	Ø 10 - 82 mm		
<b>Hand-Operated Drilling in Masonry</b>	Ø 32 - 250 mm	Ø 32 - 250 mm		
<b>Output:</b>	2.400 Watt	2.400 Watt	3.000 Watt	3.000 Watt
<b>Gear:</b>	3 Gear	3 Gear	3 Gear	3 Gear
<b>Transmission:</b>	600 / 1250 / 3200 r.p.m.	600 / 1250 / 3200 r.p.m.	215 / 430 / 785 r.p.m.	215 / 430 / 785 r.p.m.
<b>Torque:</b>	71 / 34 / 17 Nm	71 / 34 / 17 Nm	185 / 107 / 55 Nm	185 / 107 / 55 Nm
<b>Weight:</b>	17,2 kg	25,2 kg	30,1 kg	39,8 kg

Page

42, 43

44, 45

44, 45

46, 47



# RODIA® Diamond Core Drilling

## Hand-Operated & stationary Drilling

### Space Welding

Cold welding process according to cutting-edge bonding technology: Due to the "neutral zone" the entire diamond segment is used without waste.

#### SPACE WELDING

Wet and dry drilling with new technology:

- The innovative high-performance drill bit DURAMANT PRO and SPEED STAR DX is produced using cutting-edge welding technology
- Because of the neutral zone, the "Space Welding" cold welding process guarantees the optimum use of the complete diamond segments without loss
- The service life is up to 20% higher compared to lasered and soldered drill bits

### PRISMACUT

Four drill nodules on the diamond segment improve the drill behaviour and at the same time provides optimum water cooling.

#### PRISMACUT

- The exceptional segment positioning offers optimum free punch size and an excellent cutting speed
- The "PRISMACUT" centre drill nodule is characterised by a better drill behaviour and preservation of the diamond segment
- PRISMACUT guarantees direct water cooling of the diamond segments
- 15% higher cutting speed with steel reinforcement

#### Space Welding und PRISMACUT



Overwound supporting pipe for an exact rotation

Cooling fluid outlet (water)

Concrete floor, e.g. with steel reinforcement

Steel reinforcement

Free punch of the drill bit

Cooling fluid entry

Drill core

9.0 mm high diamond segment

PRISMACUT Anbohrerlinsen und Space Welding Verfahren (2 Schweißpunkte)



PRISMACUT-spot drilling support

### DX-High Speed Plus Universal Drill Bits

Space welding universal wet and dry drill bits  
Ø 10 - 300 mm



DX-High Speed Plus  
Universal Drill Bits on  
Page 49

### SPEED STAR DX

Space Welding Wet and Dry Drilling Bits  
for Ø 10 - 500 mm



SPEED STAR DX  
Drill Bits on Page 50

# RODIA® Diamond Core Drilling

## Hand-Operated & stationary Drilling

### RODIADRILL Ceramic

#### Hand-operated wet drilling, drill Ø 6 - 67 mm

Ideally suited for HVAC&R, plumbing professionals, tilers, stair builders, remodelling specialists as well as electricians. Everywhere where jolt-free operation is necessary and extremely hard materials need to be processed.



Ø 67

#### Product Profile

##### APPLICATION AREA

**Hand-operated wet drilling in:**  
(reinforced) concrete Ø 6 - 35 mm, marble, granite, ceramic tiles, masonry, hollow brickwork and glass Ø 6 - 67 mm

##### KEY FEATURES

- For all common G 1/2" drill bits
- Fatigue-free operation with the light weight
- Also drills through material combinations (for example tiles + masonry) without damaging material or surfaces and without cumbersome tool change
- "Aqua-Stop Button" with quantity adjustment
- Ideal for serial drilling with the external water supply
- Toolless exchange of the drill bits with the Quick Change system
- Integrated 1 litre water tank for 4-6 drill holes

##### TECHNICAL DATA

<b>2-speed transmission:</b>	1. Gear speed	2. Gear speed
<b>Nominal speed:</b>	3,600 rpm	6,400 rpm
<b>Drilling range in mm:</b>	Ø 25 - 67	Ø 6 - 25
<b>Voltage:</b>	230 V	
<b>Rated input/output:</b>	1,150 Watt / 800 Watt	
<b>Charging rate:</b>	3.6 A	
<b>Maximum drilling depth:</b>	400 mm (depending on material)	
<b>Minimum distance to wall:</b>	30 mm from drill hole centre	
<b>Minimum distance to corner:</b>	30 mm from drill hole centre	
<b>Weight</b>	3.4 kg Ceramic	
	3.2 kg Ceramic ECO	
<b>Stationary:</b>	Ø 67 mm (Ceramic ECO)*	

\*Only in tiles! Otherwise max. 35 mm in concrete.

#### Integrated 1 litre water tank

Sufficient supply for 4 - 6 drill holes and can be rotated when working in confined spaces

#### Quick Change System drill bit adaptor

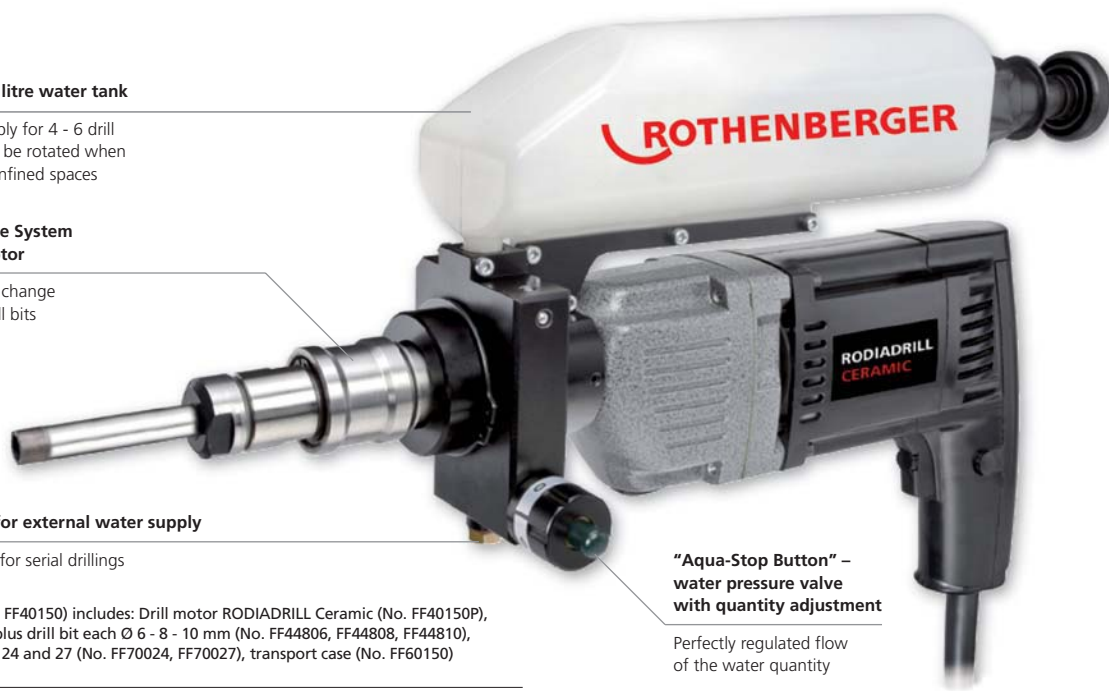
Toolless quick change for G 1/2" drill bits

#### Connection for external water supply

Ideal solution for serial drillings

**7-part set (No. FF40150) includes:** Drill motor RODIADRILL Ceramic (No. FF40150P), 1 high speed plus drill bit each Ø 6 - 8 - 10 mm (No. FF44806, FF44808, FF44810), spanners sizes 24 and 27 (No. FF70024, FF70027), transport case (No. FF60150)

Model	kg	No.
RODIADRILL Ceramic set	3.4	<b>FF40150</b>



"Aqua-Stop Button" – water pressure valve with quantity adjustment

Perfectly regulated flow of the water quantity

#### ACCESSORIES



Description	No.	Description	No.
Freehand drill support up to Ø 83 mm	<b>FF35750</b>	Water supply hose with "aqua-stop"	<b>FF35302</b>
Quick change adaptor	<b>FF35751</b>	HSP Nature stone drill bits	<b>48</b>
Pressurized water container 10 l	<b>FF35026</b>	Water collection ring, stationary	<b>FF35700</b>
Special water supply hose	<b>FF35301</b>	Transport case RODIADRILL Ceramic ECO	<b>FF60150</b>

2

# RODIA® Diamond Core Drilling

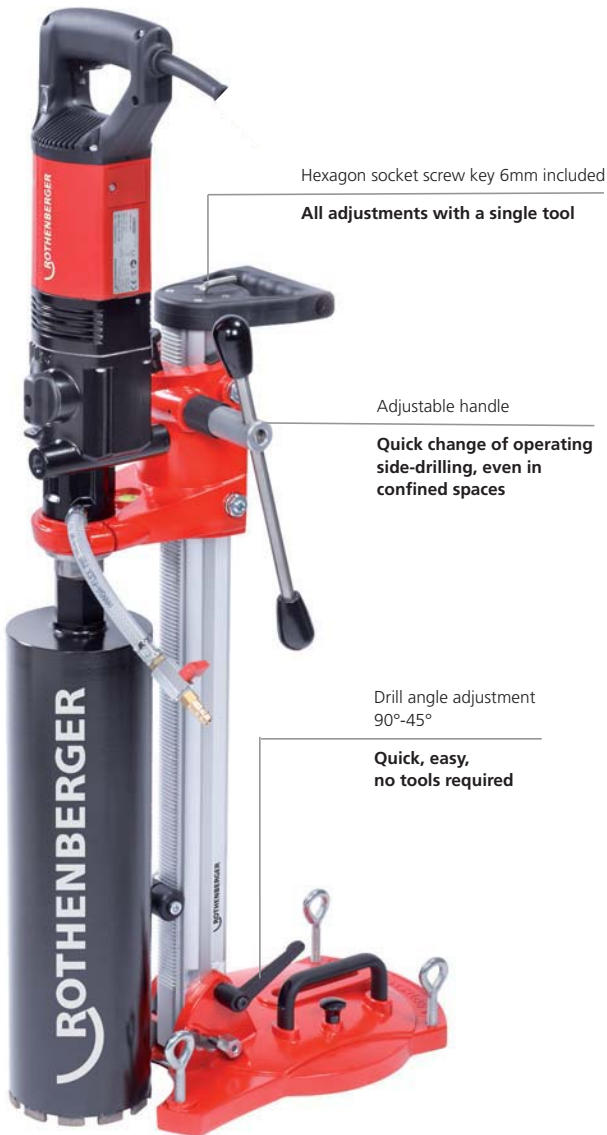
## Hand-Operated & stationary Drilling

### RODIACUT® 150 / RODIADRILL 160

RODIACUT® 150 drill column with combination drill mounting plate and RODIADRILL 160 drill motor for drilling Ø 10 – 132 mm (Ø 162 mm) in reinforced concrete

Product Profile	
APPLICATION AREA	
<b>RODIADRILL 160:</b>	
Stationary wet drilling in (reinforced) concrete:	Ø 10 - 132 mm
Hand-operated wet drilling in (reinforced) concrete:	Ø 10 - 82 mm
Hand-operated dry drilling in masonry:	Ø 10 - 162 mm
TECHNICAL DATA (DRILL STAND)	
<b>RODIACUT 150:</b>	
<b>Drilling range:</b>	w/o water collection ring max. Ø 152 mm with water collection ring max. Ø 132 mm
<b>Drill motor adaptor:</b>	Ø 60 mm
<b>L x W x H:</b>	280 x 440 x 810 mm
<b>Hub:</b>	480 mm
<b>Weight:</b>	9,7 kg

### 3 Applications with just one unit



### RODIACUT® 150 / RODIADRILL 200

RODIACUT® 150 drill column with combination drill mounting plate and RODIADRILL 200 drill motor for drilling Ø 10 – 152 mm (Ø 250 mm) in reinforced concrete

Product Profile	
APPLICATION AREA	
<b>RODIADRILL 200:</b>	
Stationary wet drilling in (reinforced) concrete:	Ø 10 - 152 mm
Hand-operated wet drilling in (reinforced) concrete:	Ø 10 - 82 mm
Hand-operated dry drilling in masonry:	Ø 10 - 250 mm

### 3 Applications with just one unit





# RODIA® Diamond Core Drilling

## Hand-Operated & stationary Drilling

### RODIADRILL 160

Drill motor



#### TECHNICAL DATA (DRILL MOTOR)

Drill motor:	RODIADRILL 160
Threaded adaptor:	G 1/2" and 1.1/4" UNC
Power Input- / output:	2000 Watt / 1400 Watt
Gear:	1. Gear      2. Gear
Torque:	55 Nm      27 Nm
Clamping neck:	Ø 60 mm

### RODIADRILL 200

Drill motor



#### TECHNICAL DATA (DRILL MOTOR)

Drill motor:	RODIADRILL 200
Threaded adaptor:	G 1/2" and 1.1/4" UNC
Power Input- / output:	2700 Watt / 2400 Watt
Gear:	1. Gear    2. Gear    3. Gear
Torque:	71 Nm    34 Nm    17 Nm
Clamping neck:	Ø 60 mm



Scope of delivery (No. FF34150): (No. FF30150) Drill stand RODIACUT 150, (No. FF40165) Drill motor RODIADRILL 160, (No. FF70001) tool bag, (No. FF70019N) Allen key SW19 DIN895, (No. FF70024) Allen key SW24, DIN894, (No. FF70036) Allen key SW36 DIN894, (No. FF70041) Allen key SW41, DIN894, (No. FF35120) Concrete Fixing Set, (No. FF35302) Water supply hose + Adapt. f. Gardena coupling, (No. 111429) Hammer drill SDS Plus, 15x160mm, (No. FF35190) Copper ring 1.1/4", (No. 1300002467) Instruction manual Drill stand RODIACUT® 150-250, (No. 1300002468) Instruction manual RODIADRILL 160+200, (No. 4100000439) Earplugs SaveRave, (No. 4100000443) rubberized gloves, (No. 4100000441) Safety Goggle HC/AF

Scope of delivery (No. FF34160): (No. FF30150) Drill stand RODIACUT 150, (No. FF40220) Drill motor RODIADRILL 200, (No. FF70001) Tool bag, (No. FF70019N) Allen key SW19 DIN895, (No. FF70024) Allen key SW24, DIN894, (No. FF70036) Allen key SW36 DIN894, (No. FF70041) Allen key SW41, DIN894, (No. FF35120) Concrete Fixing Set, (No. FF35302) Water supply hose + Adapt. f. Gardena coupling, (No. 111429) Hammer drill SDS Plus, 15x160mm, (No. FF35190) Copper ring 1.1/4", (No. 1300002467) Instruction manual Drill stand RODIACUT® 150-250, (No. 1300002468) Instruction manual RODIADRILL 160+200, (No. 4100000439) Earplugs SaveRave, (No. 4100000443) rubberized gloves, (No. 4100000441) Safety Goggle HC/AF

Model	kg	No.
Drill system RODIACUT® 150/RODIADRILL 160	17,3	<b>FF34150</b>
Drill stand RODIACUT® 150	10,5	<b>FF30150</b>
Drill motor RODIADRILL 160	6,8	<b>FF40165</b>
Drill system RODIACUT® 150/RODIADRILL 200	17,7	<b>FF34160</b>
Drill motor RODIADRILL 200	7,2	<b>FF40220</b>

#### ACCESSORIES



Model		No.	Model		No.
RODIADRILL CERAMIC	41	<b>FF40150</b>	RODIA® DRY CLEANER 1200	53	<b>FF35148</b>
Pressurized water container 10 l	52	<b>FF35026</b>	Water collection ring, stationary (for FF30150)	52	<b>FF35700</b>
Vacuum pump RODIA-VAC	51	<b>FF35200</b>	Drill Bits	48 - 50	



# RODIA® Diamond Core Drilling

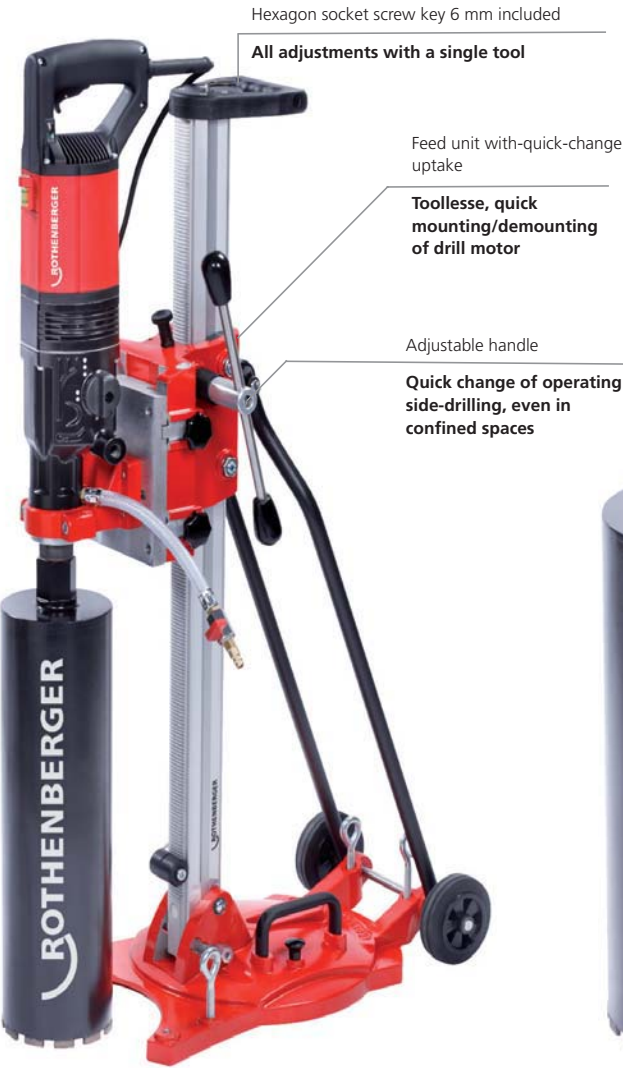
## Hand-Operated & stationary Drilling

### RODIACUT® 250 / RODIADRILL 200

RODIACUT® 250 drill column with combination drill mounting plate and RODIADRILL 200 drill motor for drilling Ø 10 – 200 mm (Ø 250 mm) in reinforced concrete

Product Profile	
APPLICATION AREA	
<b>RODIADRILL 200:</b>	
Stationary dry drilling in reinforced concrete:	Ø 10 - 200 mm
Stationary dry drilling in Masonry:	Ø 10 - 225 mm
Hand-operated wet drilling in reinforced concrete:	Ø 10 - 82 mm
Hand-operated dry drilling in masonry:	Ø 10 - 250 mm
TECHNICAL DATA (DRILL STAND)	
<b>RODIACUT 250:</b>	
<b>Drilling range:</b>	w/o water collection ring max. Ø 250 mm with water collection ring max. Ø 225 mm
<b>Drill motor-adaptor:</b>	Clamping neck Ø 60 mm and Quick-change recording via dovetail plate
<b>L x W x H:</b>	260 x 510 x 980 mm
<b>Hub:</b>	650 mm
<b>Weight:</b>	19,7 kg

### 4 Applications with just one unit



### RODIACUT® 250 / RODIADRILL 500

RODIACUT® 250 drill column with combination drill mounting plate and RODIADRILL 500 drill motor for drilling Ø 10 – 250 mm in reinforced concrete

Product Profile	
APPLICATION AREA	
<b>RODIADRILL 500:</b>	
Stationary dry drilling in reinforced concrete:	Ø 32 - 250 mm
Stationary dry drilling in masonry:	Ø 32 - 250 mm

### 2 Applications with just one unit



# RODIA® Diamond Core Drilling

## Hand-Operated & stationary Drilling

### RODIADRILL 200

Drill motor



#### TECHNICAL DATA (DRILL MOTOR)

Drill motor:	RODIADRILL 200		
Threaded adaptor:	G 1/2" and 1.1/4" UNC		
Power input / output:	2700 Watt / 2400 Watt		
Gear:	1. Gear	2. Gear	3. Gear
Torque:	71 Nm	34 Nm	17 Nm
Clamping neck:	Ø 60 mm		

### RODIADRILL 500

Drill motor



#### TECHNICAL DATA (DRILL MOTOR)

Drill motor:	RODIADRILL 500		
Threaded adaptor:	G 1/2" and 1.1/4" UNC		
Power input / output:	4000 Watt / 3000 Watt		
Gear:	1. Gear	2. Gear	3. Gear
Torque:	185 Nm	107 Nm	55 Nm
Drill motor adaptor:	Quick-change recording via dovetail plate		
Clamping neck:	Ø 60 mm		



Scope of delivery (No. FF34200): (No. FF30250) Drill stand RODIACUT 250, (No. FF40220) Drill motor RODIADRILL 200, (No. FF70001) tool bag, (No. FF70019N) Allen key SW19 DIN895, (No. FF70024) Allen key SW24, DIN894, (No. FF70036) Allen key SW36 DIN894, (No. FF70041) Allen key SW41, DIN894, (No. FF35120) Concrete fixing-set, (No. FF35302) Water supply hose + Adapt. f. Gardena coupling, (No. 111429) Hammer drill SDS Plus, 15x160mm, (No. FF35190) Copper ring 1.1/4", (No. 1300002467) Instruction manual Drill stand RODIACUT® 150-250, (No. 1300002468) Instruction manual RODIADRILL 160+200, (No. 4100000439) Earplugs SaveRave, (No. 4100000443) rubberized gloves, (No. 4100000441) Safety goggle HC/AF

Scope of delivery (No. FF34260): (No. FF30250) Drill stand RODIACUT 150, (No. FF40400) Drill motor RODIADRILL 500, (No. FF70001) tool bag, (No. FF70019N) Allen key SW19 DIN895, (No. FF70024) Allen key SW24, DIN894, (No. FF70036) Allen key SW36 DIN894, (No. FF70041) Allen key SW41, DIN894, (No. FF35120) Concrete fixing-set, (No. FF35302) Water supply hose + Adapt. f. Gardena coupling, (No. 111429) Hammer drill SDS Plus, 15x160mm, (No. FF35190) Copper ring 1.1/4", (No. 1300002467) Instruction manual Drill stand RODIACUT® 150-250, (No. 1300002469) Instruction manual RODIADRILL 500, (No. 4100000439) Earplugs SaveRave, (No. 4100000443) rubberized gloves, (No. 4100000441) Safety goggle HC/AF

Model	kg	No.
Drill system RODIACUT® 250/RODIADRILL 200	21,7	<b>FF34200</b>
Drill stand RODIACUT® 250	14,5	<b>FF30250</b>
Drill motor RODIADRILL 200	7,2	<b>FF40220</b>
Drill system RODIACUT® 250/RODIADRILL 500	31,4	<b>FF34260</b>
Drill motor RODIADRILL 500	12,1	<b>FF40400</b>

#### ACCESSORIES



Description	No.	Description	No.
RODIADRILL CERAMIC	<b>41 FF40150</b>	RODIA® DRY CLEANER 1200	<b>53 FF35148</b>
Pressurized water container 10 l	<b>52 FF35026</b>	Water collection ring, stationary (für FF30150)	<b>52 FF35700</b>
Vacuum pump RODIA-VAC	<b>51 FF35200</b>	Drill bits	<b>48 - 50</b>

# RODIA® Diamond Core Drilling

## Stationary Drilling

### RODIACUT® 400 PRO / RODIADRILL 500

Drilling system with dowel plate,  
drill Ø 32 - 400 (500)\* mm



2

#### Product Profile

##### APPLICATION AREA

###### 2 applications in one unit:

Stationary wet drilling in (reinforced) concrete Ø 32 - 400 mm  
Stationary dry drilling in masonry Ø 32 - 400 mm

##### KEY FEATURES

- Drill angle adjustments from -15° up to +45°, in 2.5° steps adjustable
- Exchangeable guide rail

#### TECHNICAL DATA (DRILL STANDS)

**Drilling range:** w/o water collection ring: max. Ø 500 mm  
optional with distance plate

**Weight:** 28,4 kg

**L x W x H:** 460 x 260 x 1100 mm

**Hub:** 680 mm



\*Distance plate optional (No. FF35136)

To enlarge the drill hole diameter  
from Ø 400 to 500 mm with  
RODIACUT® 400 PRO



#### 4x roll guides

Precise and low vibration  
operation, flexible use /  
module concept



#### Drill angle adjustments

Adjustable from -15° up  
to +45° in 2.5° steps

#### Rubber transport wheels

Quick and easy transport on  
the building site



# RODIA® Diamond Core Drilling

## Hand-Operated & stationary Drilling



2

### RODIADRILL 500

Drill motor



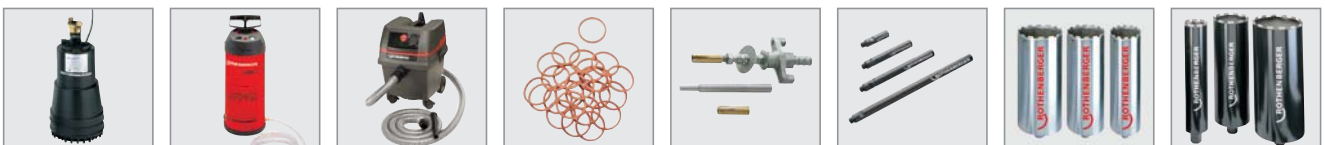
Scope of delivery (No. FF34500): (No. FF30030) Drill stand RODIACUT 400 PRO, (No. FF40400) Drill motor RODIADRILL 500, (No. FF70001) tool bag, (No. FF70019N) Allen key SW19 DIN895, (No. FF70024) Allen key SW24, DIN894, (No. FF70036) Allen key SW36 DIN894, (No. FF70041) Allen key SW41, DIN894, (No. FF35120) Concrete fixing-set, (No. FF35302) Water supply hose + Adapt. f. Gardena coupling, (No. 111429) Hammer drill SDS Plus, 15x160mm, (No. FF35190) Copper ring 1.1/4", (No. 1300002467) Instruction manual Drill stand RODIACUT® 400 PRO, (No. 1300002468) Instruction manual RODIADRILL 500, (No. 4100000439) Earplugs Save-Rave, (No. 4100000443) Rubberized gloves, (No. 4100000441) Safety Goggles HC/AF

#### TECHNICAL DATA (DRILL MOTOR)

Drill motor:	RODIADRILL 500
Threaded adaptor:	G ½" and 1.1/4" UNC
Power input / output:	4000 Watt / 3000 Watt
Gear:	1. Gear 2. Gear 3. Gear
Torque:	185 Nm 107 Nm 55 Nm
Drill motor adaptor:	Dovetail plate

Model		No.
Drill system RODIACUT® 400 PRO/RODIADRILL 500	40,5	<b>FF34500</b>
Drill stand RODIACUT® 400 PRO	28,4	<b>FF30030</b>
Drill motor RODIADRILL 500	12,1	<b>FF40400</b>

#### ACCESSORIES



Description	No.	Description	No.
Submersible water pump RODIAPUMP	52 <b>FF35029</b>	Distance plate 50 mm	<b>FF35131</b>
Pressurized water container 10 l	52 <b>FF35026</b>	Distance plate 60 mm	<b>FF35136</b>
RODIA® DRYCLEANER 1200	53 <b>FF35148</b>	Copper rings 1.1/4"	51 <b>FF35190</b>
Mounting articles	51	Extensions	52
Drill bits	48 - 50		

# RODIA® Diamond Core Drilling

## RODIA® Diamond Drill Bits

### High Speed Plus Natural Stone

Soldered diamond core wet cutting drill bit Ø 6 - 67 mm for extremely hard materials

Suitable for all other drilling systems with G 1/2" and 1.1/4" UNC!



2

#### Product Profile

##### APPLICATION AREA

**Special wet drill bits** for drilling in natural stone, granite, marble, (double) baked brick, masonry, (reinforced) concrete, glass or hollow brickwork from Ø 6 - 67 mm

**Typical areas of application** are HVAC&R, plumbing and electronic installations, old building renovations, laying tile, stairs and railing installation, air-conditioning technology, garden and landscaping

##### KEY FEATURES

- Extremely easy cuts, very long service life through 9 mm high segments
- Suitable for all ROTHENBERGER drilling machines
- Balanced rotation reduces wear
- Drilling even through material combinations possible

##### KEY FEATURES

- Drill holes on the seam or edge of material possible with the use of diamond rings
- Conventional G 1/2" threaded attachments

##### TECHNICAL DATA

###### G 1/2" connection

Drill bits	Segment	Segment dimensions (L x W x H)
Ø 6 - 40 mm	Ring segments	Ring x (1.15 - 2.0) x 9 mm
Ø 45 - 67 mm*	4 - 6	24 x 2.5 x 8 mm

**Effective length:** Ø 6.3 - 10 mm = 50 mm

Ø 12 - 67 mm = 120 mm

Special length of 300 mm available upon request

\*Single segment mounting from Ø 45 mm

9 mm high segments with high diamond concentration

Extremely easy cutting, very long service life in granite tiles

Threaded adaptor G 1/2"

Suitable for all other ROTHENBERGER drilling machines



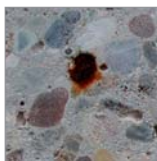
Overwound drill bits

Balanced rotation reduces wear

Drilling of the hardest materials



Reinf. concrete



Marble



Granite



Green granite



Masonry



Hollow brickwork



Aerated concrete



Asphalt



Suitable for



RD 160



Ceramic



RD 200

Ø mm	kg	Adaptor G 1/2" No.
6.3	0.17	FF44806
8.3	0.17	FF44808
10	0.17	FF44810
12	0.19	FF44812
14	0.20	FF44814
15	0.20	FF44815
16	0.20	FF44816

Ø mm	kg	Adaptor G 1/2" No.
18	0.21	FF44818
20	0.22	FF44820
22	0.22	FF44822
24	0.22	FF44824
25	0.23	FF44825
26	0.23	FF44826
28	0.25	FF44828

Ø mm	kg	Adaptor G 1/2" No.
30	0.25	FF44830
32	0.25	FF44832
35	0.30	FF44835
36	0.32	FF44836
38	0.34	FF44838
40	0.34	FF44840
42	0.35	FF44842

Ø mm	kg	Adaptor G 1/2" No.
45*	0.42	FF44845
50*	0.60	FF44850
55*	0.65	FF44855
60*	0.72	FF44860
65*	0.76	FF44865
67*	0.79	FF44867

\* with single segment mounting

### DX-High Speed Plus Universal Drill Bits

Space welding universal wet and dry drill bits  
Ø 20 - 300 mm

Space Welding and  
PRISMACUT!



2

#### Product Profile

##### APPLICATION AREA

**Wet and dry drill bits** for drilling in reinforced concrete, asphalt, masonry, as well as lime sand brick for Ø 20 - 300 mm

**Typical areas of application** are HVAC&R and electronic installations, old building renovations, building industry, air-conditioning technology, garden and landscaping

##### KEY FEATURES

- Extremely easy cutting, safe cut in hand-operated use
- Faster cutting progress and extremely long service life
- Suitable for all other ROTHENBERGER drilling machines
- Balanced rotation reduces wear

##### Suitable for



RD 160\*



RD 200\*



RD 500\*

\* We recommend the optional extraction rotor when using as a dry drill bit

**Highest service life and  
universal application!**

**Threaded adaptor  
G 1/2" and 1.1/4" UNC**

Suitable for all other  
ROTHENBERGER  
drilling machines



**Special segment mix**

Quicker drilling progress  
and extremely long service life

**Extremely easy cuts,  
safe cuts in hand  
operated use**

**Space welding**

Allows wet and dry use

**Overwound drill bits**

Balanced rotation reduces wear

Marble



Masonry



Hollow brickwork



Pavement



Lime sand brick



Reinf. concrete



Ø mm	kg	Adaptor G 1/2" No.
20	0.5	FF44620
30	0.6	FF44630
40	0.7	FF44640
52	0.9	FF44650
62	1.2	FF44660
72	1.4	FF44670

Ø mm	kg	Adaptor G 1/2" No.
82	1.6	FF44680
92	1.9	FF44690
102	2.1	FF44700
112	2.4	FF44710
122	2.6	FF44720
132	2.9	FF44730

Ø mm	kg	Adaptor 1.1/4" No.	Ø mm	kg	Adaptor 1.1/4" No.
30	0.7	FF44030	132	4.6	FF44130
40	1.2	FF44040	142	5.0	FF44140
52	1.6	FF44050	152	6.4	FF44150
62	1.9	FF44060	162	7.0	FF44160
72	2.3	FF44070	172	7.5	FF44170
82	2.6	FF44080	182	8.0	FF44180
92	3.0	FF44090	200	9.0	FF44200
102	3.4	FF44100	220	11.4	FF44220
112	3.8	FF44110	250	13.6	FF44250
122	4.2	FF44120	300	19.3	FF44300

Suitable for all other drilling systems with G 1/2" and 1.1/4" UNC!



# RODIA® Diamond Core Drilling

## RODIA® Diamond Drill Bits

### SPEED STAR DX

Space welding wet and dry drill bits Ø 10 - 500 mm

Space Welding and  
PRISMACUT!



#### Product Profile

##### APPLICATION AREA

**Wet and dry drill bits** for asphalt, masonry, as well as natural and artificial stone of Ø 10 - 500 mm

**Typical areas of application** are HVAC&R, plumbing, old building renovations, building industry, air-conditioning technology, gardening and landscaping

##### KEY FEATURES

- Extremely easy cuts, safe cut in hand-operated use
- Balanced rotation reduces wear
- Suitable for all other ROTHENBERGER drilling machines
- Standard lengths 400 / 500 mm, special lengths available on request
- Conventional G 1/2" and 1.1/4" UNC threaded adaptors

##### TECHNICAL DATA

Drill bits	Segment	Segment dimensions (L x W x H)
Ø 10 - 38 mm	1	16 x 3.0 x 7.0 mm
Ø 40 - 48 mm	1 - 4	24 x 3.0 x 9.0 mm
Ø 50 - 55 mm	5 - 6	24 x 3.5 x 9.0 mm
Ø 56 - 72 mm	6 - 7	24 x 3.5 x 9.0 mm
Ø 75 - 102 mm	7 - 8	24 x 3.5 x 9.0 mm
Ø 107 - 142 mm	9 - 11	24 x 4.0 x 9.0 mm
Ø 142 - 182 mm	11 - 14	24 x 4.0 x 9.0 mm
Ø 182 - 250 mm	14 - 16	24 x 4.0 x 9.0 mm
Ø 300 - 500 mm	16 - 26	20 x 5.0 x 9.0 mm
<b>Connection G 1/2":</b>		Effective length 400 mm
<b>Connection 1.1/4" UNC:</b>		Effective length 500 mm

Durable (DURAMANT) PRISMACUT

Extremely easy cutting, safe cut in hand-operated use

Extremely high  
diamond concentration

Faster drilling progress

Suitable for



RD 160\*



RD 200\*



RD 500\*

Special drill bits for  
pavement, asphalt, as well as  
special lengths up to 1000 mm  
available upon request!

\* We recommend the optional extraction  
rotor when using as a dry drill bit



Overwound drill bits

Balanced rotation reduces wear

Threaded adaptor  
G 1/2" and 1.1/4" UNC

Suitable for all other  
ROTHENBERGER  
drilling machines

Reinf. concrete



Marble



Asphalt



Ø mm	kg	Adaptor G 1/2" No.	Ø mm	kg	Adaptor G 1/2" No.	Ø mm	kg	Adaptor 1.1/4" No.	Ø mm	kg	Adaptor 1.1/4" No.
10	0.3	FF00610	52	0.9	FF00650	20	0.5	FF00020	122	4.2	FF00120
12	0.4	FF00612	56	1.2	FF00655	25	0.6	FF00025	125	4.3	FF00125
14	0.4	FF00614	62	1.2	FF00660	30	0.7	FF00030	132	4.6	FF00130
15	0.4	FF00615	66	1.3	FF00665	40	1.2	FF00040	142	5.0	FF00140
16	0.4	FF00616	72	1.4	FF00670	46	1.4	FF00045	152	6.4	FF00150
18	0.4	FF00618	76	1.5	FF00675	52	1.6	FF00050	162	7.0	FF00160
20	0.5	FF00620	82	1.6	FF00680	56	1.7	FF00055	172	7.5	FF00170
24	0.5	FF00624	87	1.7	FF00685	62	1.9	FF00060	182	8.0	FF00180
25	0.5	FF00625	92	1.9	FF00690	66	2.1	FF00065	200	9.0	FF00200
26	0.5	FF00626	95	2.0	FF00695	72	2.3	FF00070	220	11.4	FF00220
28	0.6	FF00628	102	2.1	FF00700	76	2.4	FF00075	250	13.6	FF00250
30	0.6	FF00630	108	2.3	FF00705	82	2.6	FF00080	280	17.6	FF00280
32	0.6	FF00632	112	2.4	FF00710	87	2.8	FF00085	300	19.3	FF00300
35	0.7	FF00635	117	2.5	FF00715	92	3.0	FF00090	350	23.6	FF00350
38	0.7	FF00638	122	2.6	FF00720	102	3.4	FF00100	400	28.4	FF00400
40	0.7	FF00640	127	2.8	FF00725	108	3.6	FF00105	450	33.6	FF00450
46	0.7	FF00645	132	2.9	FF00730	112	3.8	FF00110	500	39.1	FF00500

### Vacuum Pump RODIA-VAC

This vacuum pump is suitable for all diamond core drilling units. An extraction tank prevents the vacuum plate from loosening quickly during a sudden power failure. Oil-free vacuum pump with pressure gauge.

1.1 KW motor power  
85% Vacuum  
200 l/min extraction volume

10 l extraction tank

Safety during a power failure

Drill stand can only be mounted with a combination of vacuum plate and vacuum set!



### Vacuum-Sets



No. FF35710  
No. FF35740

### Quick Clamping Column

Toolless and reliable bracing between floor and wall or wall and wall. Maximum operation range from 1.7 m up to 3.0 with a load capacity up to 500 kg with sideways guidance.



No. FF35015

Description	kg	No.
Quick Clamping Column	9.0	<b>FF35015</b>
Vacuum pump RODIA-VAC 230 V	20.0	<b>FF35200</b>
Vacuum set, RODIACUT® 130, 131 DWS, 170 C	1.1	<b>FF35710</b>
Spare foamed rubber for drill base	0.1	<b>FF50007</b>
Vacuum set RODIACUT® 202 DWS, 270 C	1.1	<b>FF35740</b>
Spare foamed rubber for drill base	0.1	<b>FF50008</b>

### Concrete / Masonry Fixing Set

Includes (No. FF35120): Knurled thread rod Type G-B 160 mm, screw thread M 12/20 mm (No. FF35129), U-washer (No. FF70166), winged nut M 12 (No. FF55150), 25 x drive-in anchor M 12 (No. FF 35122) and drive-in iron (No. FF35128)

Includes (No. FF35121): Knurled thread rod Type G-M 280 mm, screw thread M 12/85 mm (No. FF35130), U-washer (No. FF70166), winged nut M 12 (No. FF55150), hexagonal nut M12 (No. FF70167), 5 x Rawl-Anchor M 12 (reusable) (No. FF35126) and drive-in iron (No. FF35128)



No. FF35120

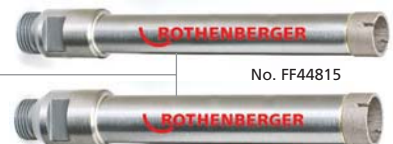
No. FF35121

### Special Diamond Drills for Tiles and Natural Stone

For use when hammer drills can not do the job. Various material combinations, such as tiles on concrete, can be easily drilled without damage.

#### Special Diamond Drills

for Tiles and Natural Stone



No. FF44815

No. FF44820

### SDS-plus Hammer drill



### Thread Interfaces

Between motor connection and drill bit



No. FF35095



No. FF35080



No. FF35091

### Copper Rings 1.1/4

Levels out the unevenness between motor connection and drill bit. Easy loosening prevents drill bits from getting stuck on the driveshaft.



Description	kg	No.
Concrete fixing set	1.90	<b>FF35120</b>
Drive-in anchor concrete M12	0.04	<b>FF35122</b>
Threaded rod, B15 concrete set	0.20	<b>FF35129</b>
Threaded rod, B15 masonry	0.30	<b>FF35130</b>
Wet drill bit Ø 15 mm	0.20	<b>FF44815</b>
Masonry fixing set	1.10	<b>FF35121</b>
Rawl anchor M 12	0,08	<b>FF35126</b>
SDS-plus Hammer drill Ø 20 mm, NL. 300 mm	0,22	<b>111449</b>
Wet drill bit Ø 20 mm, G1/2"	0,22	<b>FF44820</b>
G 1/2" outer thread to 1.1/4" UNC outer thread	0,50	<b>FF35080</b>
1.1/4" UNC inner thread to G 1/2" inner thread	0,70	<b>FF35095</b>
Adaptor DD-BI to G 1/2" + 1.1/4"	0,50	<b>FF35091</b>
Adaptor DD-BU to G 1/2" + 1.1/4"	0,80	<b>FF35092</b>
Threaded interface WÜRTH to 1.1/4"	0,60	<b>FF35101</b>
Copper ring 1.1/4"	0,05	<b>FF35190</b>

# RODIA® Diamond Core Drilling

## Accessories Hand-Operated & stationary Drilling

### Water Supply

The sturdy 10 litre pressurized water container made of steel is perfectly suited for individual drilling. When drilling large diameters or series drillings, the fully submersible RODIAPUMP enables a mobile supply of water from buckets or other containers up to a delivery height of 5 meters using a 1" water hose.

#### Comfortable water connection

Quick connection with the GK adaptor and quick-plug coupling

#### Rust-free motor shaft

Prevents the quick jamming of the rotor

#### Fine filter

Prevents entry of foreign materials and protects the motor shaft

No. FF35029



Description	kg	No.
Submersible water pump RODIAPUMP	4,40	<b>FF35029</b>
Water supply hose with Aqua-Stop	0,20	<b>FF35302</b>

#### Manometer

pressure indicator

#### 2.5 meter hose length

Ideal use for ceiling holes

No. FF35026



#### Connection Quick plug-in coupling

Drip-free connection even under water pressure

Description	kg	No.
Pressurized water container	5,50	<b>FF35026</b>
Special water supply hose	0,20	<b>FF35301</b>

### Water Extraction Systems

The dirty cooling water is extracted in connection with a wet and dry vacuum (FF35148, FF35210)



No. FF35730

Only for RODIACUT® 202 DWS, 250 and 270 C



No. FF35700

Only for RODIACUT® 131 DWS, 150 and 170 C

Description	kg	No.
Water collection ring, stationary (up to Ø 132 mm)	1.2	<b>FF35700</b>
Spare rubber membrane (for FF35700)	0.3	<b>FF55131</b>
Water collection ring, stationary (up to Ø 200 mm)	2.5	<b>FF35730</b>
Spare rubber membrane (for FF35730)	0.6	<b>FF55201</b>

### Extensions

#### G 1/2" and 1.1/4" UNC

Easy extension of the drilling depth  
High-quality and robust steel design



Extensions  
G 1/2"



Extensions  
1.1/4" UNC

Nominal length mm	kg	G 1/2" No.	kg	1.1/4" UNC No.
100	0,40	<b>FF35040</b>	1,00	<b>FF35060</b>
200	0,90	<b>FF35045</b>	2,00	<b>FF35065</b>
300	1,40	<b>FF35050</b>	3,00	<b>FF35070</b>
500	2,40	<b>FF35055</b>	5,10	<b>FF35075</b>

### Extraction Rotor "RODIADUST"

#### Universal adaptor for wet drilling machines for dust-free dry drilling

Provides optimum extraction results in conjunction with RODIA DRY CLEANER (FF35148) and increases the drilling process, prevents jamming of drill bit and reduces segment wear.

Model	kg	No.
Extraction Rotor 1.1/4" UNC (G1/2" Machine)	1,90	<b>FF40056</b>





# RODIA® Diamond Core Drilling

## Extraction systems

### RODIA DRY CLEANER 1200

#### Wet and dry extraction unit

Especially good performance when used with WALL CUT 6540, RODIADRILL 1800 DRY or other ROTHENBERGER extraction-friendly system products

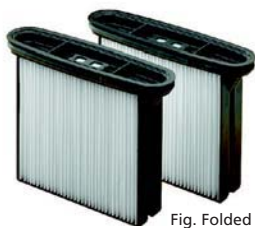


Fig. Folded filter  
No. FF55374

Model	kg	No.
RODIA DRY CLEANER 1200	10.8	FF35148
Folded filter (2 piece) for wet suction	1.0	FF55374
Fleece filter (5 piece) for dry suction	0.3	FF55388

**Constant extraction power!**  
**Automatic filter-cleaning function!**

#### High cleaning efficiency

2 polyester-filter cassettes with 99.9% dust retention (max. 20 l), water retention of 15 litres

#### Separate automatic outlet

Adaptor for further electric tools



#### User comfort with a wide operating range

5 m long suction hose and 8 m long AC power cord

### RODIA CLEANER 1400

#### Water suction unit

##### KEY FEATURES

- Easy-to-handle and powerful 1400 watt water extraction unit
- 35 litre container made of zinc-plated steel plate with acrylate coating: Rust-free
- Separate automatic outlet connection for an additional electrical tools



Set (No. FF35210) includes various extraction tubes and extraction nozzles. Wet-suction is possible when used with the cartridge filter system. When used with a cloth filter, dry suction possible. Suitable for use with our core drilling systems.

Model	kg	No.
RODIA CLEANER 1400	9.0	FF35210
Cartridge filter	1.0	FF55447
Paper filter (5 piece)	1.0	FF55448

#### Separate automatic outlet

Connection for additional electrical tools



#### Light and easy-to handle

Impact protective ring at base with 4 double roller wheels, 9 kg weight